

A MEDIA INDEPENDENT DOCUMENT MANAGEMENT COMPANY



EYE COMMUNICATION SYSTEMS, INC.

455 E. Industrial Drive

P.O. Box 620

Hartland, WI 53029 USA

(262) 367-1360 or (800) 558-2153

Fax: (262) 367-1362

www.eyecom.com



The Eye Com Briefcase Portable Model 2100 Operating and Maintenance Instructions

Introduction

Thank you for purchasing the Eye Com Briefcase Portable Model 2100 Reader. To ensure correct use of this equipment, please read this operating manual, and keep it for future reference.

Unpacking

Remove all interior tape and packing material (save carton and any packaging inserts). In the event of damage during shipment, notify the carrier at once as there may be a time limit on filing a claim. Do not return the unit for repair until Eye Com has been contacted for an authorization number and repackaging instructions. Any further damage due to improper repackaging will be charged to the consignee.

General Operating Instructions

POWER SWITCH: The Eye Com Model 2100 reader has a three-position AC/Off/DC power switch.

NOTE: *For automobile or optional internal battery pack operation, use the DC position on the power switch.*

FOCUSING: The continuous rotating focus assembly adjusts the objective lens for optimum image clarity.

CARRIER: The carrier holds the fiche or jacket securely in place. The upper glass opens automatically when the carrier is pulled toward the operator.

INDEXING: Indexing is used as an aid in quickly finding a desired frame of information. Alpha are located vertically on sides of carrier, and numeric are located horizontally on the cover bracket near the rear carrier runner.

NOTE: *Due to weather conditions, condensation may form on the carrier glass, mirrors, and lenses. The carrier glass, upper mirror, condenser lens, and the objective lens can all be wiped quickly with a non-abrasive cloth. The lower mirror located inside the reader is not easily accessible. To clear this mirror, turn the unit on, and allow the heat from the lamp to burn off any condensation.*

Operating Instructions

AC Operation:

1. Unwind the power cord from rear of cover plate.
2. Connect the plug into a nearby, and easily accessible, AC outlet.

NOTE: *See silver-colored data plate (under screen in lower half of case) for proper AC voltage.*

3. Pull the upper mirror bracket up and toward you; it will snap into its proper position.
4. Pull the carrier toward you until the glass is open and the carrier stops.
5. Insert microfiche or jacket between upper and lower glass. (See Figure 1).
6. Push carrier away from you to allow the glass to secure the microfiche.
7. Push the power switch to the AC position.
8. Turn the focus knob until the image on the screen is clear and sharp.
9. To index, move the carrier in or out until the desired letter (on the proper color-coded grid) is aligned with the white line on the lower carrier. Now, move the carrier left or right to align the edge of the carrier with the desired number (on the proper color-coded grid).

DC Automotive Operation:

1. Insert adapter cord into auto jack mounted in rear of cover plate (See Figure 2).
2. Plug opposite end of adapter into automobile cigarette lighter outlet.
3. Pull the upper mirror bracket up and toward you; it will snap into its proper position.
4. Pull the carrier toward you until the glass is open and the carrier stops.
5. Insert microfiche or jacket between upper and lower glass (See Figure 1).
6. Push carrier away from you to allow the glass to secure the microfiche.
7. Push the power switch to the DC position.
8. Turn the focus knob until the image on the screen is clear and sharp.
9. To index, move the carrier in or out until the desired letter (on the proper color-coded grid) is aligned with the white line on the lower carrier. Now, move the carrier left or right to align the edge of the carrier with the desired number (on the proper color-coded grid).

DC Battery Operation (Optional):

1. Push the power switch to the DC position.
2. Pull the upper mirror bracket up and toward you; it will snap into its proper position.
3. Pull the carrier toward you until the glass is open and the carrier stops.
4. Insert microfiche or jacket between upper and lower glass (See Figure 1).
5. Push carrier away from you to allow the glass to secure the microfiche.
6. Turn the focus knob until the image on the screen is clear and sharp.
7. To index, move the carrier in or out until the desired letter (on the proper color-coded grid) is aligned with the white line on the lower carrier. Now, move the carrier left or right to align the edge of the carrier with the desired number (on the proper color-coded grid).

NOTE: *The optional battery pack in this unit is a high-capacity Ni-Cad rechargeable type. The 11 cell, 1/2 D size, 13.2 volt battery pack, when fully charged, will operate the reader for a maximum of 1 hour.*

Recharging Battery Pack:

1. Unwind the power cord from the rear of the cover plate.
2. Connect the power cord to a nearby, and easily accessible, AC outlet.

NOTE: *See silver-colored data plate (located under screen in lower half of case) for proper AC voltage. (Domestic 110/120 volt, Foreign 220/240v0115)*

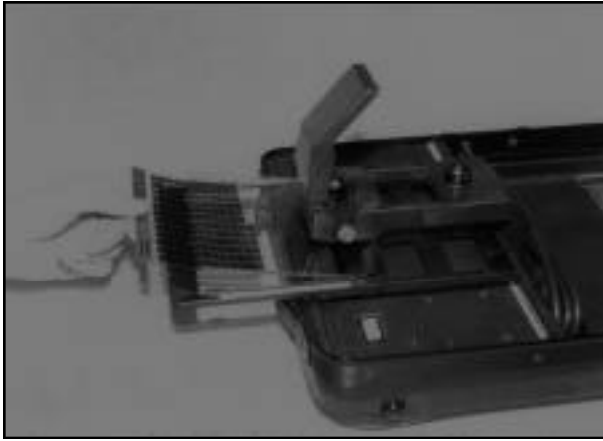


Figure 1

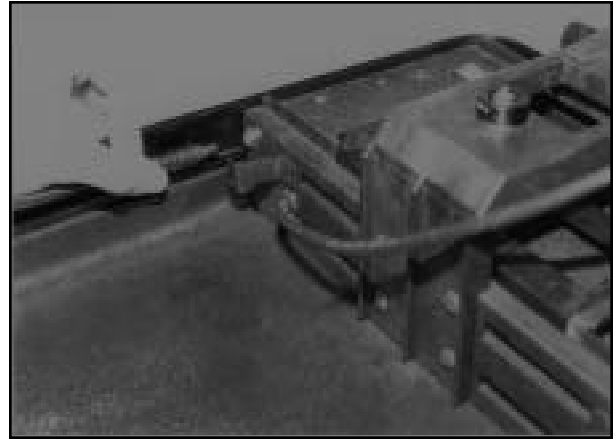


Figure 2

3. The power switch must be in the "OFF" position.
4. The battery pack will be fully charged in 16 to 20 hours, depending upon the age of the pack. The pack will not overcharge.
5. Be sure to recharge immediately after the battery pack has been fully discharged (after 1 hour of use).

Wall Projection

The Eye Com Model 2100 is also capable of projecting onto a wall or large screen. Simply unsnap both stays on the upper half of the case and lower the top table level (See Figure 3).

Drop In Lens System

The magnification of the Eye Com Model 2100 is easily changed via the drop in lens system (See Lens Chart on page 5).

1. Raise upper mirror bracket to the operating position.
2. Remove lens by lifting it straight up. Place the inactive lens in spare lens hole and place the desired lens in the brass barrel housing (See Figure 2).

NOTE: *Take care not to scratch the mirror with your fingers or the lens.*

Lamp Replacement

(Figures 3 & 4)

CAUTION:



Allow lamp to cool before attempting to remove it.

1. Disconnect the power cord.
2. Remove access door by lifting up and out using finger tab.
3. Remove lamp by sliding it out of the lamp holder.
4. Disconnect socket from lamp.
5. Reverse steps 1, 2, and 3 with a new lamp. (See the pictorial instructions above screen).
6. Replace lamp with the type shown on data plate.
7. Replace access door. Replace glass assembly.
8. Reconnect power cord.

NOTE: *Be careful not to touch the bulb portion of the new lamp. Oils will decrease lamp life and dim the image.*

Maintenance

Maintenance of the Eye Com Model 2100 is limited to periodic cleaning of the viewing screen, upper and lower glasses, lenses and mirrors. We recommend a monthly schedule for cleaning of these optical components. If these components are not kept clean, there will be a slow deterioration of your image quality and brightness.

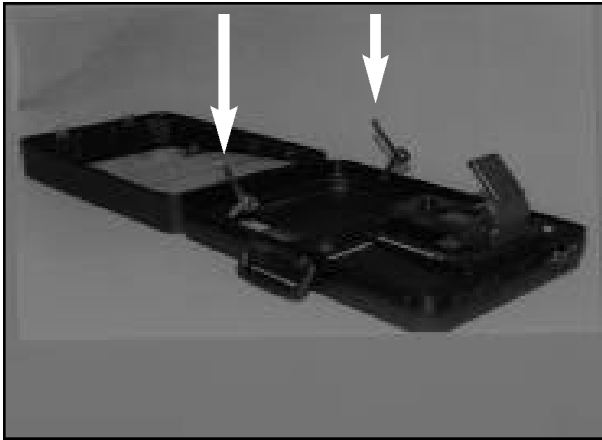


Figure 3



Figure 4

Carrier Glass Removal and Cleaning

(Figures 5 & 6)

1. Slide the carrier to the far left position, and remove it from the runners (See Figure 5).
2. Remove upper glass.
3. Remove lower glass by pushing up from below and pulling out toward the rear (See Figure 6).
4. Clean the glass surfaces with glass cleaner and a non-abrasive cloth.
5. Replace the lower glass in carrier, then replace the upper glass.
6. Clean the condenser lens with a camel hair brush or glass cleaner and non-abrasive cloth.
7. Replace the carrier assembly on the runners.

NOTE: *When reassembling carrier glass, push upward on lens barrel with the upper carrier glass.*

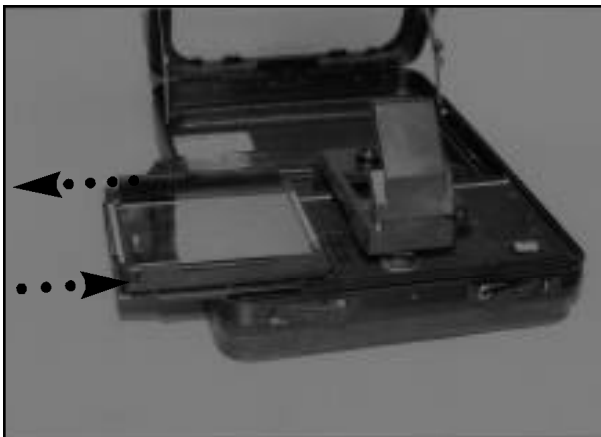


Figure 5

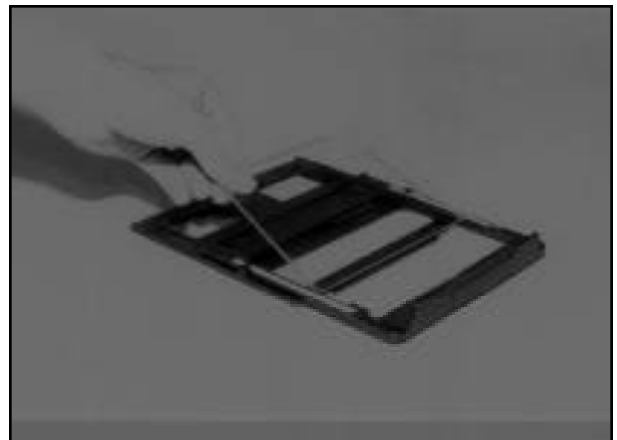


Figure 6

Viewing Screen Removal and Cleaning

1. Remove the screen by lifting it up and out using the screen tabs at the bottom of the screen.
2. Use Data Vu Cleaning Mist and a non-abrasive cloth to gently wipe down the screen.

NOTE: *Screens are coated with a special material to provide a sharp, non-glare image. Harsh solutions should not be used in cleaning, as they may damage the screen.*

Objective Lens Removal and Cleaning

1. Remove lens from brass barrel.
2. Brush loose any dust and dirt from the exposed lens element with a camel hair brush.
3. Wipe the lens element with a soft, non-abrasive cloth.
4. Replace the lens into the brass barrel.

Mirror

The mirror in the Eye Com Model 2100 is “front surface coated” to give maximum reflectivity and high resolution. As these types of mirrors are very susceptible to scratching, use a camel hair brush to remove lint and dust. Avoid touching the mirror surface as body oils will mar the mirror surface. Grease and other contaminants should be removed gently with glass cleaner and a non-abrasive cloth. We recommend the Data Vu Cleaning Kit.

Storage of Reader

1. Place the power switch in the “OFF” position.
2. Disconnect power cord and rewind on the rear of the cover plate. Use the “cord grip” on the plug to secure the cord.
3. Fold mirror bracket down.
4. Move the carrier under the cantilever as shown in the pictorial instructions above the screen. Failure to do this may result in damage to the carrier system.
5. Replace fiche storage panel and secure using turnbuckles.
6. Close the case and latch.
7. Do not store with installed battery pack in a fully discharged condition.

Trouble Shooting

No Light On Screen.

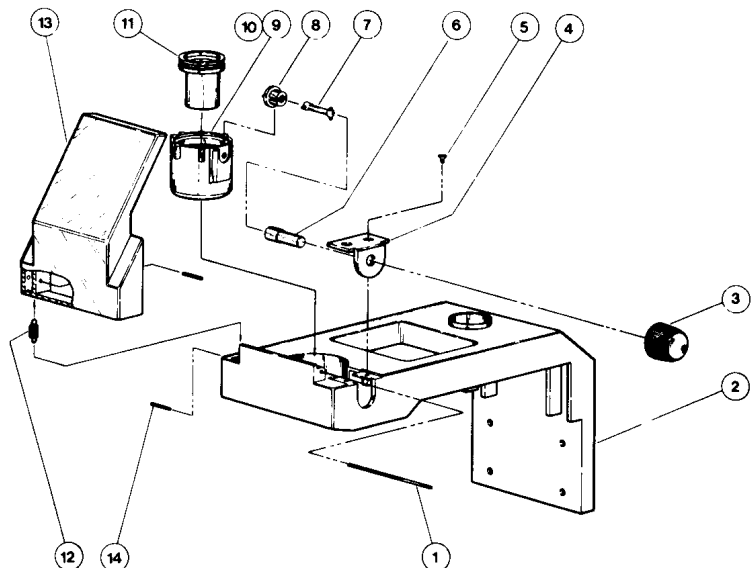
1. Check that the switch is in the proper position for the immediate power source.
2. Check that the upper mirror bracket is in the up (or working) position.
3. If using the O.C. battery pack, the battery must be charged.
4. Check for moisture condensation on the mirror and lenses. Wipe upper mirror and lenses, but allow the lamp to burn off any condensation on the lower mirror located inside the unit.
5. Replace the lamp. (See Instructions on page 5).

Reader Will Not Focus.

1. With the unit turned on, check that the lens housing is floating on the upper glass at all times.
2. Check that the objective lens moves up and down when the focus knob is rotated. If not, remove the lens, and check that the eccentric universal (item number 8 on page 7) is rotating when the focus knob is turned.

LENS CHART			
LENS	PART NO.	FORMAT	ACTUAL MAGNIFICATION
10mm	1129	72x	54x
12.5mm	1113	42x	42x
15mm	1043	48x	36x
17mm	1044	42x	32x
22 mm	1150	24x	24x

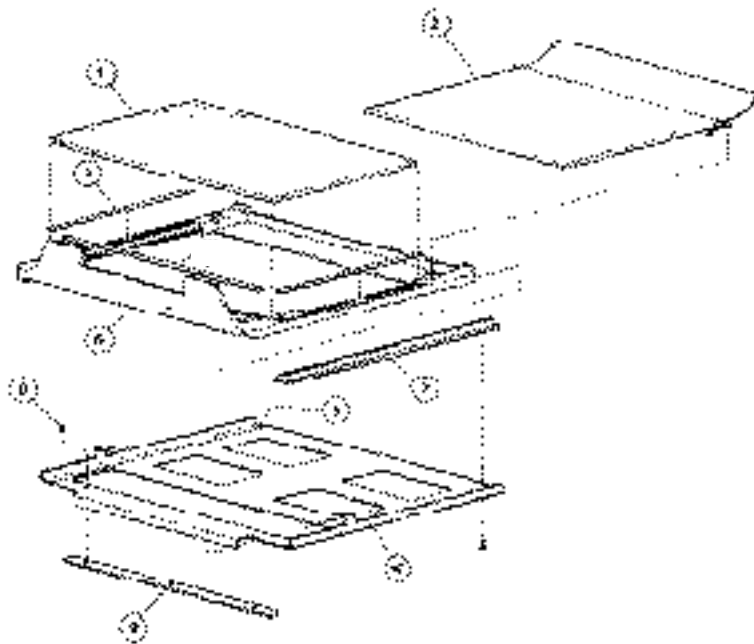
FOCUS ASSEMBLY PARTS LIST EYE COM 2100



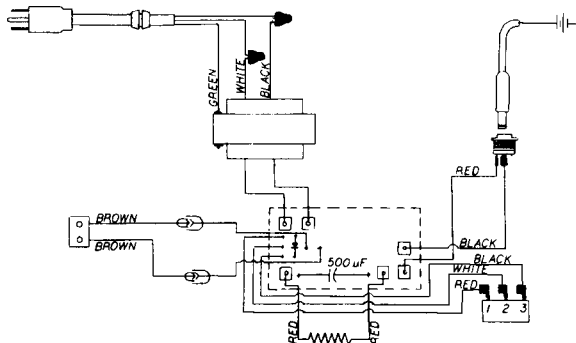
ITEM NO.	PART NO.	DESCRIPTION	QTY.
1	2109	Rod, Mirror Bkt.	1
2	2105	Cantilever	1
3	1314	Focus Knob	1
4	2106	Retainer, Focus Mech	1
5	2136	Screw 4-40x 1/4"	2
6	2110	Main Focus Shaft	1
7	2111	Universal Focus Shaft	1
8	1115	Eccentric Universal	1
9	1645	Barrel Housing	1
10	1120	Brass Barrel	1
11	1129	10mm Lens	1
	1113	12.5mm Lens	1
	1043	15mm Lens	1
	1044	17mm Lens	1
	1150	22mm Lens	1
12	1066	Spring	1
13	7101	Upper Mirror Bkt.	1
14	2174	Spring Pin	2

CARRIER SYSTEM PARTS LIST EYE COM 2100

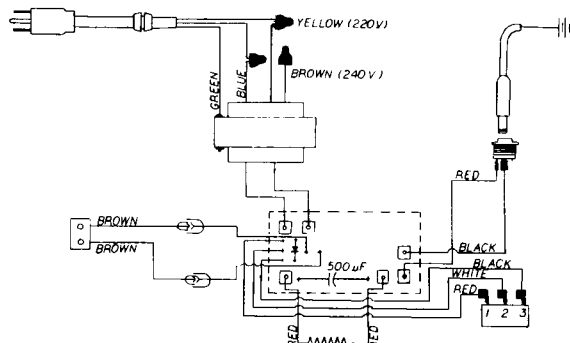
ITEM NO.	PART NO.	DESCRIPTION	QTY.
1	1017	Lower Glass	1
2	7009	Upper Glass Assembly	1
3	2129	24x Grid set	1
	2130	42x Grid set	1
	2131	48x Grid set	1
5	1067	Teflon Tape	2
6	2100	Upper Carrier	1
7	2104	Carrier Runner, Upper	1
8	2137	Screw 2 x 3/16"	6
9	2107	Carrier Runner, Lower	1



**120 Volt
Wiring Diagram**



**220/240 Volt
Wiring Diagram**

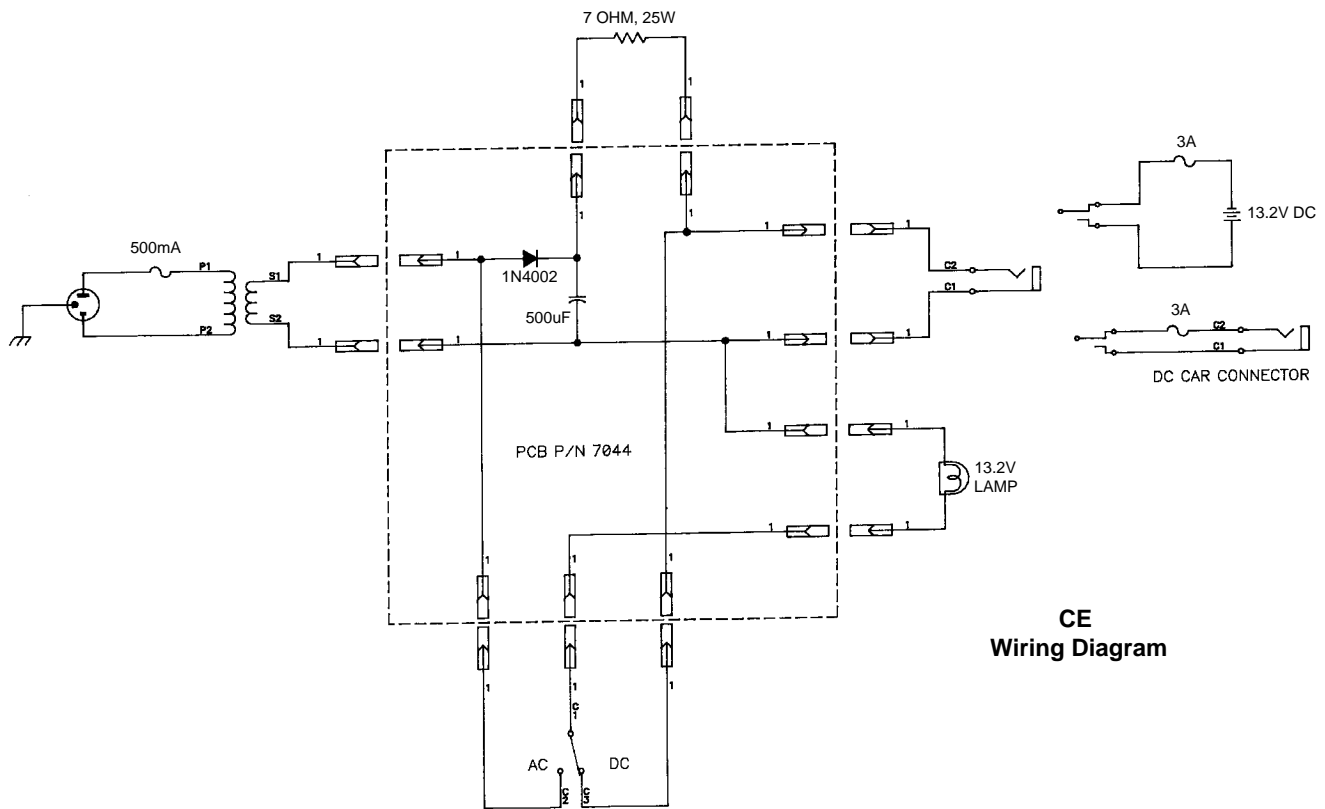
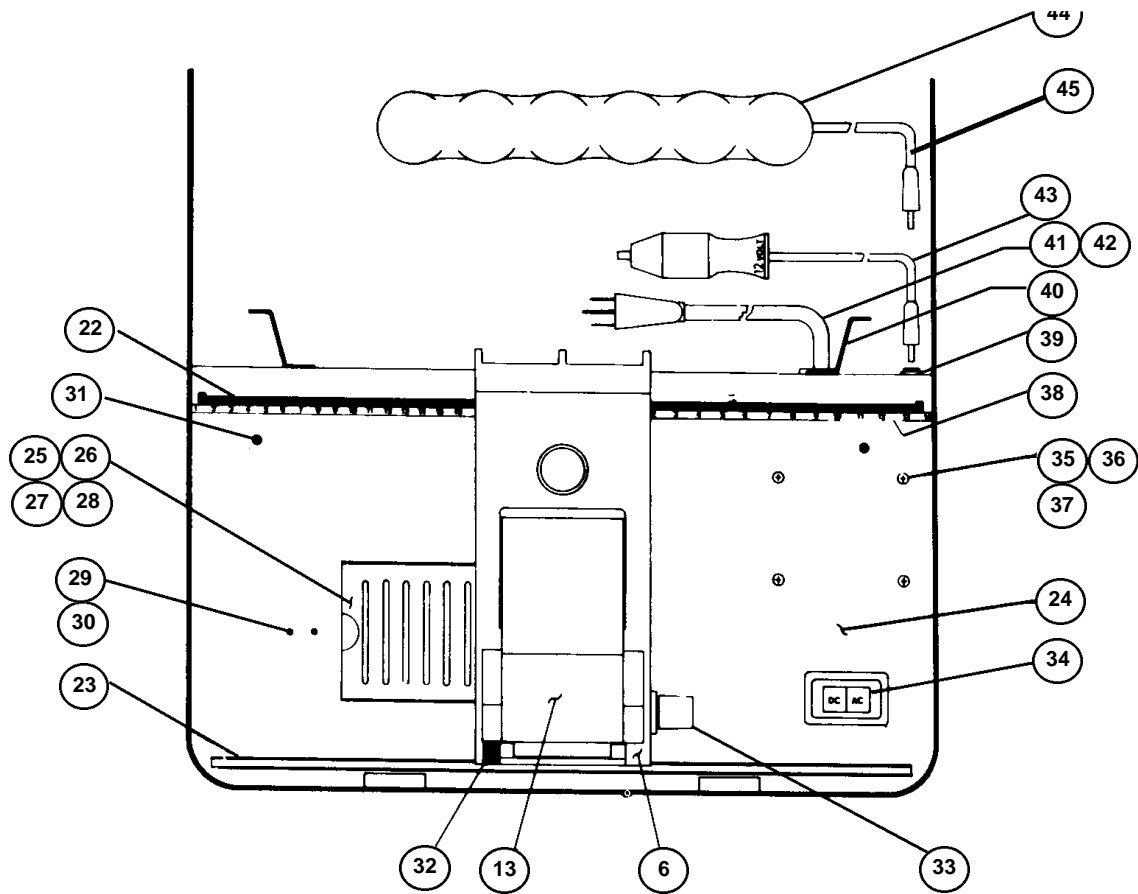


PARTS LIST EYE COM 2100

ITEM NO.	PART NO.	DESCRIPTION	QTY.	ITEM NO.	PART NO.	DESCRIPTION	QTY.
1	7105	Screen Assembly	1	25	2125	Access Door	1
2	7109	Case Assembly	1	26	2117	Heat Sink	1
3	1112	#10 Lockwasher	4	27	1042	Lamp Holder	1
4	2139	8-32 x 1/2 Mach. Screw	4	28	1083	Screw Lamp Holder	2
5	1077	8-32 Hex Nut	4	29	1241	.120 x 1/8" Rivet	2
6	2105	Cantilever	1	30	2123	Spring Clip	1
7	1017	Lower Glass	1	31	2141	.120 x 3/16- Rivet	6
8	7009	Upper Glass Assembly	1	32	1066	Spring	1
9	1645	Barrel Housing	1	33	1314	Focus Knob	1
10	1120	Brass Barrel	1	34	1706	Switch AC/DC	1
11	1129	10mm Lens	1	35	2138	Mach. Screw #6 x 1-3/4"	4
	1113	12.5mm Lens	1	36	1640	#6-32 Hex Nut	4
	1043	15mm Lens	1	37	2143	Spacer	4
	1044	17 mm Lens	1	38	2129	24x Grid Set	1
	1150	22mm Lens	1		2130	42x Grid Set	1
12	7101	Upper Mirror Assembly	1		2131	48x Grid Set	1
13	2108	Upper Mirror Bkl.	1	39	1710	Coaxial Receptacle	1
14	2109	Rod	1	40	2127	Cord Wrap	2
15	2100	Upper Carrier	1	41	1708	US Power Cord	1
16	2101	Lower Carrier	1		1058	European Power Cord	1
17	1611	Condenser Lens	1		2187	European Power Cord (CE)	1
18	2114	Large Support Angle	1		1059	Australian Power Cord	1
19	2149	Screen Holder	2		1060	U-K Power Cord	1
21	2162	Velcro 7" Strip x 5/8"	3	42	2124	Strain Relief - Domestic	1
22	2103	Lower Runner Rear	1	43	2192	3" Automotive D.C. Cord	1
23	2102	Lower Runner Front	1	44	7107	Battery Pack Assembly	1
24	2112	Cover Plate	1	45	7077	Battery Plug Assembly	1

REPLACEMENT PARTS LIST EYE COM 2100

Description	Part No.	Description	Part No.
Upper Glass Assembly	7009	Upper Mirror	2119
Lower Glass	1017	Lower Mirror	2120
Screen Assembly	7105	Fiche Panel	2216
Lamp, 13.8 Volt, 25 Watt FLT	1006	24X Grid Set	2129
Transformer, 120V	1008	42X Grid Set	2130
Transformer, 220/240V	1055	48x Grid Set	2131
Transformer, 230V (CE)	1039	Battery Pack Assembly	7107
		Battery Plug Assembly	7077
		Ambient Light Shield	7166
		Cleaning Kit	7045
<u>Lenses:</u>		3'D.C. Auto Cord	2192
10mm Lens (54X: 75% blowback of 72X fiche)	1129	Lamp Socket Assembly	7058
12.5mm Lens (42X: 100% blowback of 42X fiche)	1113	Fuse 3A	2240
15mm Lens (36X: 75% blowback of 48X fiche)	1043	Fuse 1/2A(CSA)	2193
17mm Lens (32X: 75% blowback of 42X fiche)	1044	Fuse 1/2A(CE)	2094
22mm Lens (24x: 100% blowback of 24X fiche)	1150		



**CE
Wiring Diagram**

**REFER TO PARTS LIST ON PAGE 7
EYE COM 2100**