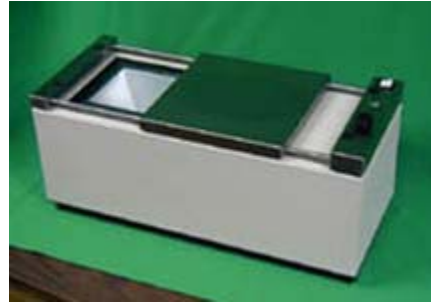


# GEMINI SLX - Fiche Exposure Unit

## Planetary Microfiche Exposure Unit

The GEM SLX has been specifically designed to meet the need for a low volume exposure unit for diazo or vesicular film.



There are no doors to lift and latch - just slide the cover over the fiche. The GEM SLX automatically locks, exposes, and then releases the fiche.

This unit works well with jackets and COM in addition to micro-published fiche.

### ADVANTAGES

- High Quality Reproduction
- Easy Operation
- Compact
- Intermittent or continuous use
- Designed for in-office applications
- Non-ammonia: uses Coupler Sheets
- Inexpensive
- Long lamp life ... inexpensive replacement lamps
- Reliable - six month warranty

### SPECIFICATIONS

Lamp	400 watt: This lamp also used in: - Xidex/Anacomp/CMI 16-D,16-V roll film duplicators. - M2 Exposure Unit
Exposure Rate	30 - 50 per hour
Warm-up Time	3 minutes
Electrical	110 v - 60 hz - 6 amp 230 v - 50 hz - 3 amp
Dimensions:	9.25" (23.5cm) h, 24" (61cm) w, 10.25" (26cm) d
Weight:	Net: 52 lbs (24kg); Shipping: 65 lbs (30kg)