

# ALOS



**For high quality, cost-effective microform access in a broad range of applications, the ALOS Z-Scan 46 is an ideal choice.** It lets you view images from any microfilm media format on screen, as well as make clear, crisp laser prints on a stand-alone laser printer that is fast and easy to use. Add an optional PC interface kit, and you can scan to PC at up to 800 dpi resolution—allowing you

to use your microform information in e-mails, faxes, electronic distribution, and filing of information. The ALOS Z-Scan 46 offers a wide range of automatic features and options for added flexibility and convenience. You also get the benefits of digital reliability and rugged construction.



## VERSATILITY

# ALOS PROVIDES SYSTEM VERSATILITY TO MAKE YOU MORE PRODUCTIVE.

Sometimes you need a quick print. Sometimes you'd prefer scanning to your PC. ALOS' Z-Scan 46 makes it easy to do both—and that can make your microform application more productive.

Connect your ALOS Z-Scan 46 to both printer and PC, and you can conveniently switch from high-speed laser printing to scanning output at the touch of a button.

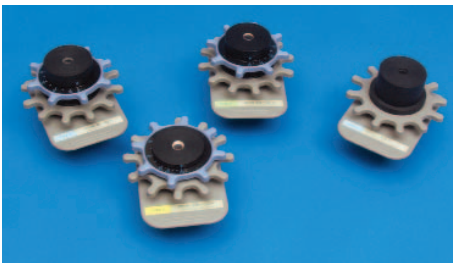
So for printing and scanning, speed and convenience, quality and reliability, and total system versatility, the ALOS Z-Scan 46 is the ideal microform solution for a wide range of high-productivity applications—in libraries, reference collections, education, government, or business—because it combines more ways to use your micrographics archives.

Read on screen. Print on paper. Scan to PC. The digital era gives you new opportunities for making microform information more powerful, versatile, and cost-effective.

A wide range of options are available, so you can handle any microfilm and microfiche images. And with the modular designed scanner and printer, you can set up your system to suit your work environment—even have two scanners share a single MSP3000 Printer.

With the Z-Scan 46's quality optics and sturdy construction, we've raised our own high-standard for high-resolution scanning, fast high-quality printing, ease of operation, and long-term reliability.

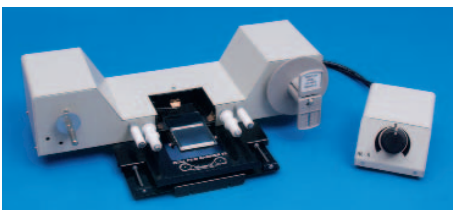
### HIGH QUALITY OPTICS



You choose from four types of interchangeable lenses with any magnification ratio you need, from single focus 7.5x lens, to zoom lenses that span 9-16x, 13-27x or 20-50x zoom ratios.

### MICROFORM CARRIERS

Whatever your application, ALOS provides the carrier you need. We offer a full selection of precision microform carriers for roll film and fiche, aperture cards and jackets, motorized or manual film drive, manual or auto-load, and any film requirements.



Carriers are also interchangeable with the ALOS Z43 Reader-Printer.

### LASER PRINTING

**SUPERIOR PRINT QUALITY:** The exclusive Fine Micro-Toning (Fine-MT) system uses precision and proven, field-tested laser technology to reproduce fine details other printers might miss. You can choose "Text" mode for legible text, "Photo" mode to make halftone images more vivid, or "Fine" for maximum detail.

The **MSP2000 Printer** is cost effective if price is a major consideration in an 8.5" x 11" only application.



When printing versatility is required, the **MSP3000 Printer** is the ideal choice. You can output laser prints on a variety of paper: 8.5" x 11" landscape and portrait, 8.5" x 14", even 11" x 17" to reproduce oversized originals or 2-page spreads from books and magazines.

The Z-Scan 46 can automatically scale all images to fit larger size output or you can enlarge from 50% up to 200% to show more detail. 600 dpi resolution ensures to give you sharp, legible images.

With output speed of the **MSP3000 Printer** of up to 20 high-resolution prints per minute you can make prints faster. 150-sheet paper tray and 250-sheet universal cassette give you a standard 400-sheet capacity – and you can add optional 250-sheet universal or

500-sheet letter-size cassettes for high-volume applications.

When greater cost efficiency or workspace is an issue, the 2-to-1 sharing lets you share two Z-Scan 46 scanners with a single MSP3000 Printer—more reasons to choose ALOS!

### SCANNING TO PC (optional)

With a touch of a button the ALOS Z-Scan 46 makes it easy to scan microform information to your PC. You can scan to PC for electronic filing, internal and external distribution via fax, e-mail, intranet or internet, and for access throughout your organization.

To make scanning easy, a standard SCSI interface with TWAIN software driver lets you use Windows 95/98, NT4.0, 2000, or XP. A SCSI-2 connection allows faster transfer rates through standard cables.





**SIMPLE TO USE**

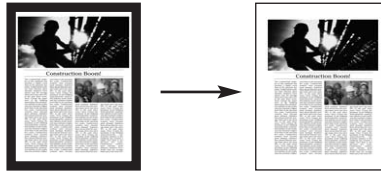
For walk-up users, the Z-Scan 46 is simple and self-explanatory. All important controls are at your fingertips and clearly labeled – including a Dual Output function that prints or scans images at the touch of a button.

**STANDARD FEATURES**

**AUTO EXPOSURE**

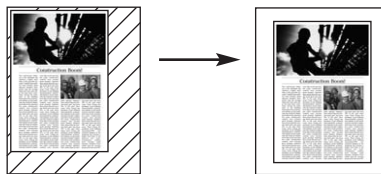
The Z-Scan 46 determines the exposure setting automatically for the highest quality scan. Manual exposure override is available.

**AUTO FRAME MASKING**



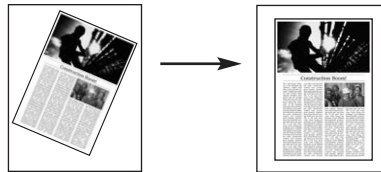
The system masks the black bands that run along the edges of the image.

**AUTO CENTERING**



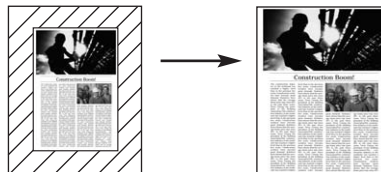
The system generates an image that is centered on the printed page, from an image on the screen with a masked frame.

**AUTO SKEW CORRECTION**



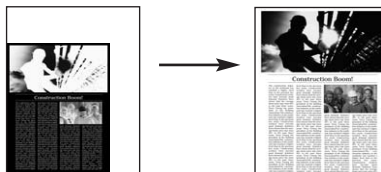
The machine automatically corrects any skew of up to 30 degrees when the image is printed.

**FIT TO PRINT**



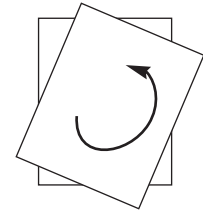
Fit the image on the screen onto the entire surface of the print (50% to 200%).

**AUTO FILM POLARITY DETECTION**



True Bi-Mode sensing allows the Z-Scan 46 to automatically determine the film type so you get a positive printout whether you are using negative or positive film.

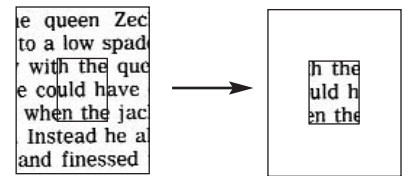
**AUTO IMAGE ROTATION**



Rotates the image electronically or with an optical prism to the print orientation desired.

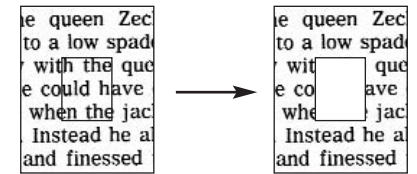
**OPTIONAL FEATURES**

**MANUAL MASKING**



The system masks the selected outer frame of the image. Manual Frame Masking Kit (option) is required. The Kit provides side-screen LED lights for visual cues to allow the user to manually select print or scan areas, as well as define the areas to be masked.

**MANUAL TRIMMING**



The system marks the area of the image appearing on the screen through the Manual Frame Masking Panel function. Manual Frame Masking Kit (option) is required. The Kit provides side-screen LED lights for visual cues to allow the user to manually select print or scan areas, as well as define the areas to be trimmed.

**GRAYSCALE SUPPORT**

If your business application demands high-quality photos and detailed graphics, the optional Grayscale Upgrade Kit lets you output 8-bit grayscale images to your PC. 256 grayscale levels reveal more detail compared to black and white images, and allows low-contrast images to be captured as accurately as possible.

## Z-SCAN 46 MICROFORM SCANNER



**OPTIONAL WORKSTATION:**  
With space-saving over/under design – Z-Scan 46 above, the MSP3000 or MSP2000 Laser Printer below.

### SPECIFICATIONS

**Type:** Desktop Universal Digital Microform Scanner  
**Type of Film:** Microfiche, jackets, aperture cards, 16mm and 35mm roll film, 16mm film cartridges  
**Screen Size:** 12" x 12" (300 x 300mm)  
**Magnifications:** 7.5x, 9-16x, 13-27x, 23-50x  
Same Lenses as Z43 R-P  
**Focus Control:** Manual  
**Image Rotation:** Prism rotation (standard Auto Image Rotation; prism included)  
**Zooming:** Manual  
**Scanning Speed:** 6.5 seconds/page  
**Scanning Density:** 200, 300, 400, 600, 800 dpi  
**Optical Resolution:** 400 dpi  
**Electronic Zooming:** 50% - 200%, print to fit paper

**Multiple Printing:** 1-19 prints (LED countdown identification) with MPS2000 & 3000 printer  
**Hardware Interface:** Video (direct print), SCSI-2 (to PC) - optional Switchable on front panel  
**Exposure:** Auto, Manual  
**Scanning Features:** Standard included:  
- Auto Centering  
- Auto Frame Masking  
- Auto Image Rotation  
- Auto Skew Correction  
- Front-Panel Scanning  
Optional:  
- Manual masking (trimming and masking)  
- Footswitch Support  
- Date Stamp Annotation  
- Grayscale support  
- Mechanical Counter  
**Halogen Lamp:** 20V, 150W  
**Power Requirements:** AC 120V, 60Hz  
**Power Consumption:** 350W

**Dimensions (WxDxH):** 19-3/4" x 32-3/8" x 28-1/4" (503 x 821 x 716 mm)  
**Weight:** 86lbs (39kg)  
**Options:**  
Microform Carriers:  
- Fiche Carrier 9  
- Universal Carrier 2  
- Universal Carrier 50  
- Universal Carrier 59/59M  
- Rollfilm Carrier 9B  
- Rollfilm Carrier 53/53M  
- Rollfilm Carrier 15A/15M  
- Rollfilm Carrier 22A  
Other Options:  
- Lenses (see Magnifications)  
- Manual Frame Masking Kit  
- PC Interface Kit  
- Grayscale Kit (256 levels, 8-bit Output to PC)  
- Mars Controller 4  
- Mars Mini Controller 2  
- Workstation  
- Footswitch  
Printers:  
- MSP3000 Digital Laser Printer and Cable  
- MSP2000 Digital Laser Printer and Cable

## MSP3000 PRINTER



**MSP3000 DIGITAL PRINTER:**  
20-ppm output speed, max. 1,150-sheet paper capacity, first copy in just 13 seconds.

### SPECIFICATIONS

**Printer Method:** Laser electrostatic  
**Developing System:** Fine Micro-Toning (Fine-MT) system  
**Print Resolution:** 600 dpi  
**First Print Speed:** 13 seconds (8.5" x 11" or A4; landscape)  
**Print Speed:** 20 sheets per minute (8.5" x 11" or A4, 400 dpi)  
**Print Size:** 8-1/2" x 11" (A4) landscape  
8-1/2" x 11" (A4) portrait  
8-1/2" x 14" (B4) landscape  
11" x 17" (A3) portrait  
**Paper Supply:** 150-sheet universal paper tray  
250-sheet universal cassette  
500-sheet letter size cassette (optional)  
Third paper tray with 250-sheet universal tray (optional)

**Maximum Paper Capacity:** 1,150 sheets  
**Warm-up Time:** Less than 70 seconds  
**Power Requirements:** AC 120V, 60Hz  
**Power Consumption:** 750W  
**Dimensions (WxDxH):** 22" x 20-1/2" x 16" (561 x 521 x 409mm)  
**Weight:** 61lbs 12oz (28kg), (including imaging cartridge)

## MSP2000 PRINTER



**MSP2000 DIGITAL PRINTER:**  
8-ppm output speed, 250-sheet paper capacity, first copy in 19 seconds.

### SPECIFICATIONS

**Printer Method:** Laser electrostatic  
**Developing System:** Fine Micro-Toning (Fine-MT) System  
**Print Resolution:** 400 dpi  
**First Print Speed:** 19 seconds (8-1/2" x 11" or A4)  
**Print Speed:** 8 sheets per minute (8-1/2" x 11" or A4, 400 dpi)  
**Print Size:** 8-1/2" x 11" (or A4)  
**Paper Supply:** 250-sheet (multi-purpose paper tray), Manual feeding (one sheet at a time)  
**Maximum Paper Capacity:** 250 sheets  
**Warm-up Time:** Less than 20 seconds  
**Power Requirements:** AC120V, 60Hz  
**Power Consumption:** 580W or less

**Dimensions (WxDxH):** 15-1/2" x 17-1/2" x 13" (with face up tray) (394 x 446 x 327mm)  
**Weight:** 15lbs 7oz (7kg) (without toner cartridge)  
Drum cartridge weight: approximately 1.1lbs (0.5kg)

# ALOS